



Two new species and new records of Cerambycidae (Insecta, Coleoptera) from Itatiaia National Park, Rio de Janeiro, Brazil

MARCELA L. MONNÉ^{1,2} MIGUEL A. MONNÉ^{1,2} JUAN P. BOTERO¹ & ALLAN CARELLI¹

¹*Departamento de Entomologia, Museu Nacional, Universidade Federal do Rio de Janeiro- UFRJ, Quinta da Boa Vista, São Cristóvão, CEP 20940-040, Rio de Janeiro, RJ, Brazil. E-mail: mlmonne2@gmail.com*

²*Conselho Nacional de Desenvolvimento Científico e Tecnológico – CNPq*

Abstract

The descriptions of two species of Lamiinae, *Lepturges (Lepturges) batesi* **sp. nov.** (Acanthocinini) and *Onocephala chicomendes* **sp. nov.** (Onocephalini) and an addendum of Cerambycinae and Lamiinae to the list of species of Cerambycidae in the Itatiaia National Park are presented. The data are based on fieldwork conducted over the last six years. Eighteen species of Cerambycinae and 21 of Lamiinae are recorded, with a total of 39 new distribution records.

Key words: Cerambycidae, Coleoptera, Atlantic Rainforest, new species, new records

Resumo

As descrições de dois Lamiinae, *Lepturges (Lepturges) batesi* **sp. nov.** (Acanthocinini) e *Onocephala chicomendes* **sp. nov.** (Onocephalini) e uma adenda de Cerambycinae e Lamiinae ao inventário das espécies de Cerambycidae (Coleoptera) do Parque Nacional do Itatiaia são apresentadas. Os dados foram baseados em coletas de campo. Dezoito espécies de Cerambycinae e 21 de Lamiinae são registradas, totalizando 39 novas ocorrências de distribuição.

Palavras chave: Cerambycidae, Coleoptera, Mata Atlântica, novas espécies, novos registros

Introduction

The Atlantic Rainforest is one of the most important eco-regions in the world, a biodiversity hotspot, and is considered one of the most threatened biomes on the planet. Itatiaia National Park (PNI) is the oldest national park in Brazil, established in 1937, and one of the most important Conservation Units of the Atlantic Rainforest (ICMBio, 2013).

Concerning the fauna of insects, there is limited knowledge about the species of Coleoptera in the PNI. Recently, Monné *et al.* (2009, 2010, 2012) published checklists of Cerambycinae (293 species), Lamiinae (322 species), Parandrinae (8 species), Prioninae (20 species) and Lepturinae (5 species) with occurrences in the Parque Nacional do Itatiaia, totaling 648 species of Cerambycidae. Subsequent papers added four species: *Unaiuba m-fasciata* Schmid, 2015, *Lophopoenopsis itatiaiensis* Monné & Monné, 2012, *Trichonius inusitatus* Monné & Monné, 2012 and *Urgleptes villiersi* Gilmour, 1962 (Fig. 34) (Bezark, 2013; Monné & Monné, 2012; Schmid, 2015), and two species were erroneously recorded: *Taeniotes amazonum* Thomson, 1857 and *Lepturges (Chaeturges) dorsalis* (White, 1855) (Monné *et al.* 2012).

Here we describe two new species of Lamiinae (*Lepturges (Lepturges) batesi* **sp. nov.** and *Onocephala chicomendes* **sp. nov.**) Eighteen species of Cerambycinae and 21 of Lamiinae are newly recorded for the PNI, bringing the total species within Cerambycidae to 689 species. These records give us a better understanding of which species are being protected within the national park.

Material and methods

The Itatiaia National Park is located between 22°19'–22°45' S and 044°15'–044°50' W, on the boundary of the states of Rio de Janeiro, Minas Gerais and São Paulo, in the Serra da Mantiqueira. The park covers part of southwestern Rio de Janeiro, in the county of Itatiaia, and southeastern Minas Gerais, in the counties of Itamonte, Alagoa and Bocaina de Minas. The park is surrounded by the Mantiqueira Range Environmental Protection Area, which provides an ecological buffer zone for the park (ICMBio, 2013).

The specimens under study were obtained in several collections between September 2010 and February 2016 (ICMBio permit Number 16928). The list is presented in alphabetical order by tribe, subtribe, genus and species, and the references are restricted to the original description and those authors who proposed nomenclatural modifications. The distributions were obtained from Monné (2016) and all specimens are deposited in the MNRJ.

Abbreviations:

ACMT	American Coleoptera Museum, Texas, United States
FAPERJ	Fundação Carlos Chagas Filho de Amparo à Pesquisa do Estado do Rio de Janeiro
ICMBio	Instituto Chico Mendes de Conservação da Biodiversidade
MIZA	Museo del Instituto de Zoología Agrícola, Entomología, Universidad Central de Venezuela, Maracay, Aragua, Venezuela
MNRJ	Museu Nacional, Universidade Federal do Rio de Janeiro, Rio de Janeiro, Brazil
PNI	Parque Nacional do Itatiaia

Tribe Acanthocinini

The genus *Lepturges* Bates, 1863 is among the largest in the tribe Acanthocinini, with 67 described species of *Lepturges* (*Lepturges*) and 20 in *Lepturges* (*Chaeturges*) Gilmour, 1959 (Monné, 2016). *Lepturges* differs from *Chaeturges* in the absence of short bristles on the distal half of the lateral sides of the elytra.

Lepturges is very similar to *Urgleptes* Dillon, 1956. Species of *Urgleptes* have punctures limited to a row along the basal transverse sulcus, extending behind the lateral pronotal tubercles. In *Lepturges*, the punctures along the basal sulcus do not extend behind the lateral pronotal tubercles and sometimes there are other scattered, large punctures on the pronotal disk. *Lepturges* also differs from *Lepturgantes* Gilmour, 1957 in having the antennae with 11 antennomeres; members of *Lepturgantes* have 12.

Lepturges (*Lepturges*) *batesi* sp. nov.

(Figs. 14–17, 19)

Male. Integument dark brown. Head covered with dense, appressed, pale white to golden pubescence, denser on sides of front. Antennae more than twice length of body, exceeding elytral apex at distal extremity of antennomere VI; antennomeres without setae on surface. Lower eye lobe more than twice height of upper lobe; distance between upper lobes twice diameter of one lobe. Pronotum rounded at sides to posteriorly directed acute tubercle demarcated with row of punctures. Disk without elevations, center of disk with scattered punctures. Pronotum with antemedian row of four rounded patches of whitish pubescence, large grayish-white triangular patch in the middle of posterior half, similar pubescence at base of lateral tubercles; prosternal and mesosternal processes, as wide as than 1/5 of coxal cavities. Scutellum with rounded apex, covered with ashy white pubescence.

Elytra covered with brown and patches of white grayish pubescence as follows: minute rounded macula between scutellum and humeri; large patch in anterior half, with irregular margins, enclosing rounded brown macula; in distal half a large patch in distal third, with irregular margins, and three rounded minute maculae on each elytron. Elytral apex obliquely truncated, outer angle slightly projected in obtuse projection. Surface very finely and minutely punctate.

Metatarsi I twice as long as II+III. Last visible urotergite rounded at apex, urosternite with subtruncate end.

Female (Fig. 17). Antennae exceeding elytral apices at end of antennomere VIII; urotergite rounded at apex; urosternite with apex slightly semicircularly excavated.

Etymology. We name this species for Henry Walter Bates (1825–1892), in appreciation of his great contributions to the knowledge of insects. The epithet is a noun in apposition.

Measurements, in mm. Holotype male, total length, 8.0; prothorax length, 1.5; prothorax width at its widest point, 2.1; elytral length, 5.5; humeral width, 2.6. Paratypes, male/female, n = 21 / 26. Total length: 8.14±1.18 / 8.52±1.07, prothorax length: 1.52±0.26 / 1.49±0.20, prothorax width at its widest point: 2.30±0.37 / 2.30±0.31, elytral length: 5.77±0.88 / 5.85±0.82, humeral width: 2.65±0.47 / 2.70±0.39.

Type material. Holotype male, BRAZIL, *Rio de Janeiro*: Parque Nacional do Itatiaia, 750 m, 11–14.I.2008, M.L.Monné, J.R.Mermudes, H.S.Monné & M.A.Monné. (MNRJ). Paratypes: same locality, female, 5–25.XI.1974, H. S. & M.A. Monné col. (MNRJ). *Rio de Janeiro*: Distrito Federal (currently Rio de Janeiro), Serra dos Três Rios, Grajaú, 2 males, female, 25.X.1954, Newton Santos col. (MNRJ); 2 males, 3 females, 25.X.1955, Newton Santos col. (MNRJ). *Amazonas*: Benjamin Constant, female, X.1979, B. Silva col. (MNRJ). *Rondônia*: Pimenta Bueno, male, female, X.1986, O. Roppa, P. Magno & J. Becker col. (MNRJ). Vilhena, male, X.1986, O. Roppa, P. Magno & J. Becker col. (MNRJ). *Mato Grosso*: Sinop. 5 males. 4 females, X.1974, Roppa & Alvarenga col. (MNRJ). *Bahia*: Encruzilhada, Estrada Rio-Bahia, km 965, Motel da Divisa, male, XI.1972, Seabra & Roppa col. (MNRJ); male, 3 females, XII.1972, Seabra & Roppa col. (MNRJ); 3 males, 2 females, XI.1974, Seabra & Roppa col. (MNRJ); 3 females, XII.1974, Seabra & Roppa col. (MNRJ). *Minas Gerais*: Pedra Azul, male, XII.1972, Seabra & Roppa col. (MNRJ). *Espírito Santo*: Linhares (Parque Sooretama), female, X.1967, F. M. Oliveira col. (MNRJ). *São Paulo*: São Paulo, Capital, female, IV.1974, V. Alin col. (MNRJ); Peruibe, male, 4.II.1947, H. Zellibor col. (MNRJ). VENEZUELA, *Tachira*: Rio Frio (600 m), female, 02–10.IX.1981, A. Chacon col. (MIZA) PERU, *Madre de Dios*: Avispas, male, 10–30.IX.1962, L. Peña col. (MNRJ). BOLIVIA, *Santa Cruz*: 4–6km SSE Buena Vista (Hotel Flora y Fauna), male, 10–15.XI.2002, R. Clarke col. (ACMT); male, female, 16–30.XI.2002, R. Clarke col. (MNRJ); 5 km SSE Buena Vista (Hotel Flora y Fauna), female, 15.X.2004, R. Clarke col. (ACMT); female, 6.XII.2004, R. Clarke col. (ACMT). ARGENTINA, *Misiones*: Estación Experimental Loreto, male, A. Ogloblin col. (MNRJ).

Remarks. *Lepturges (Lepturges) batesi* sp. nov. (Figs. 14–17, 19) has a similar pattern of coloration to *Lepturges (Chaeturges) dorsalis* (White, 1855) (Figs. 18, 20) and was previously erroneously identified as the latter species from Itatiaia National Park (Monné *et al.*, 2012). It differs from *L. (C.) dorsalis* in having the half distal part of the sides of the elytra without short bristles (Fig. 20).

Tribe Onocephalini

The tribe Onocephalini contains 18 species described in three genera, *Onocephala* Sturm, 1843 with nine species, *Pseudoperma* Dillon & Dillon, 1946 with two species, and *Stethoperma* Lameere, 1884 with seven species. All the species occur exclusively in Brazil, except *Stethoperma obliquepicta* Breuning, 1940 which occurs in Brazil and Paraguay (Monné, 2016).

Onocephala chicomendes sp. nov.

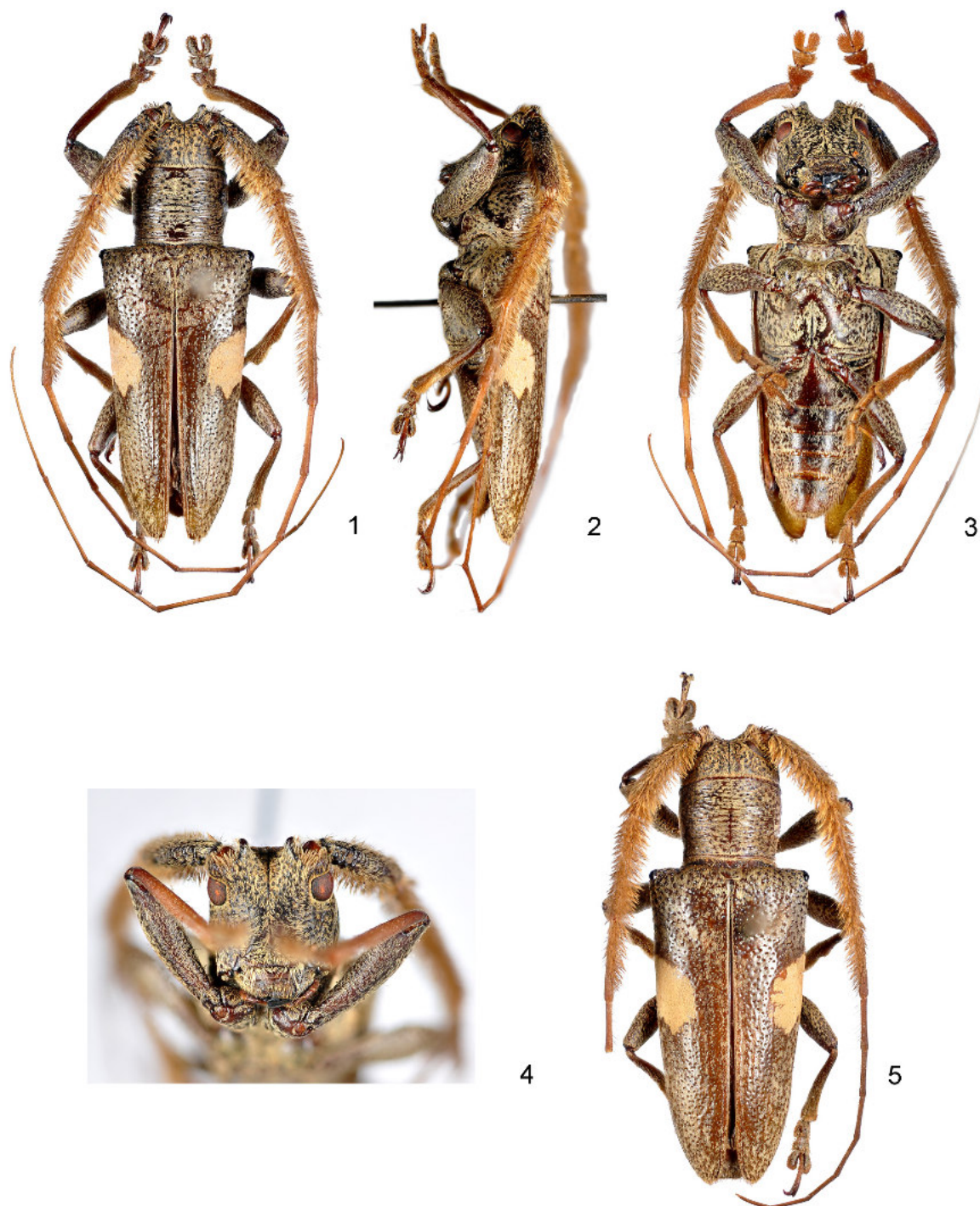
(Figs. 1–5)

Holotype male (Figs. 1–4). Integument brown, entirely covered with short, dense pale yellowish pubescence. Antennae brownish-yellow; antennal tubercles, scape, pedicel and antennomeres III–IV covered with pale yellowish pubescence. Elytra with a premedian, pale yellowish macula, slightly oblique, reaching external margin, posterior margin of macula dentate.

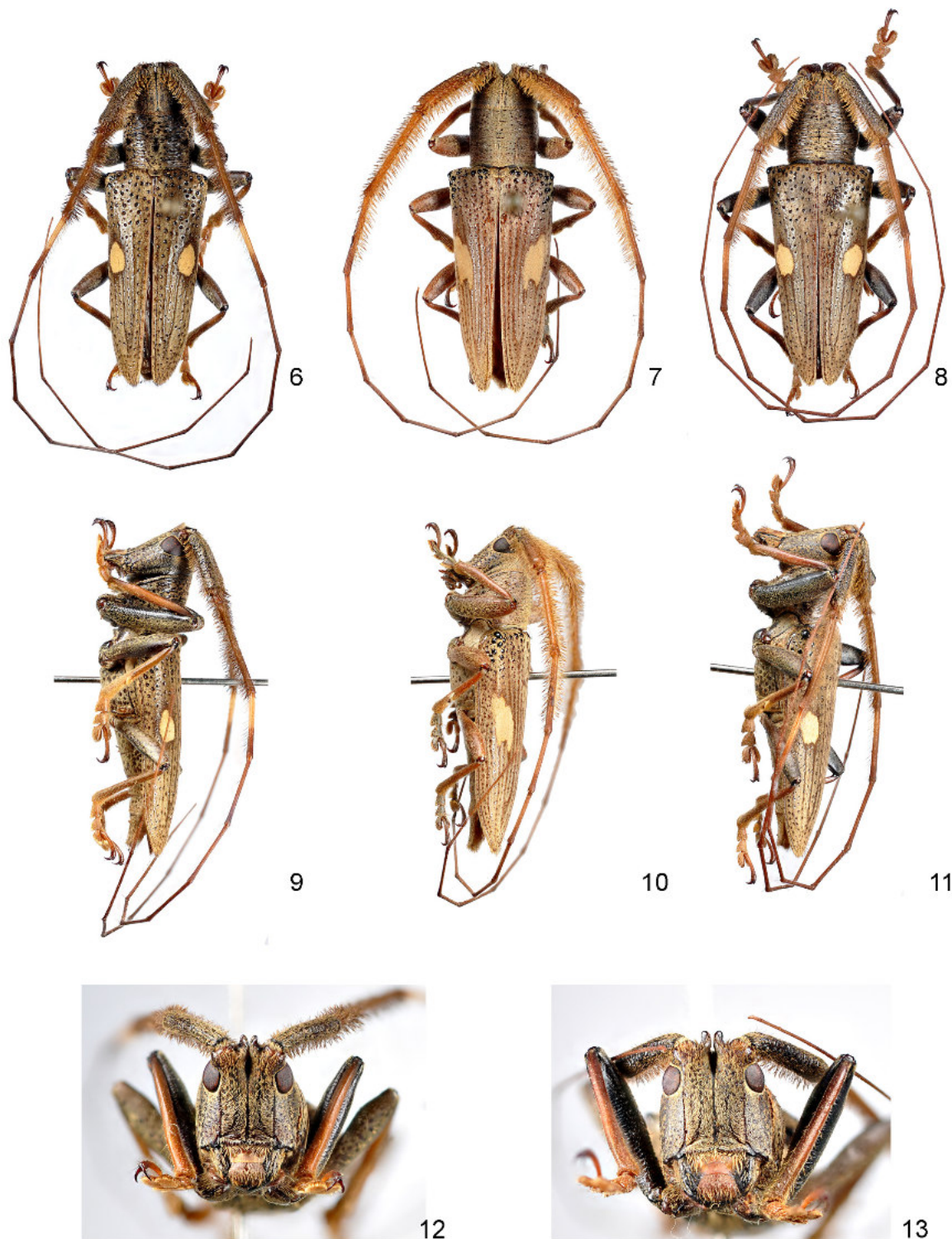
Head (Fig. 4) with coronal suture from occiput to clypeus; surface sparsely, finely punctate; front slightly convex, separated from genae by longitudinal carina; genae twice longer than height of lower ocular lobe, with median longitudinal sulcus under eye; antennae exceeding elytral apex at apex of antennomere VI; antennal tubercles strongly projected, acuminate at apex, covered with long, dense pubescence which extends to antennomere IV; distance between apex of tubercles five times width of an upper ocular lobe; scape densely and

coarsely punctate; antennomere III 1.2 times length of scape and as long as antennomere IV; antennomere IV covered with pubescence only in internal face, 1.3 times length of antennomere V; antennomeres V–VI subequal in length, with sparse and long setae on internal face; antennomeres VII–XI increasing in length.

Prothorax cylindrical, unarmed, transverse, 1.3 times wider than long; surface punctate, except ventrally; pronotum transversely rugose; prosternal process depressed, as wide as 1/3 of procoxal cavities. Mesosternal process as wide as 3/4 of mesocoxal cavities. Scutellum with apex truncate. Elytra sparsely granulate at base, entirely finely punctate, more shallowly toward apex; humeri tuberculate. Pro-, meso- and metafemora fusiform; metafemora not reaching elytral apex. Last visible urotergite and urosternite trapezoidal, with apical margin sinuous.

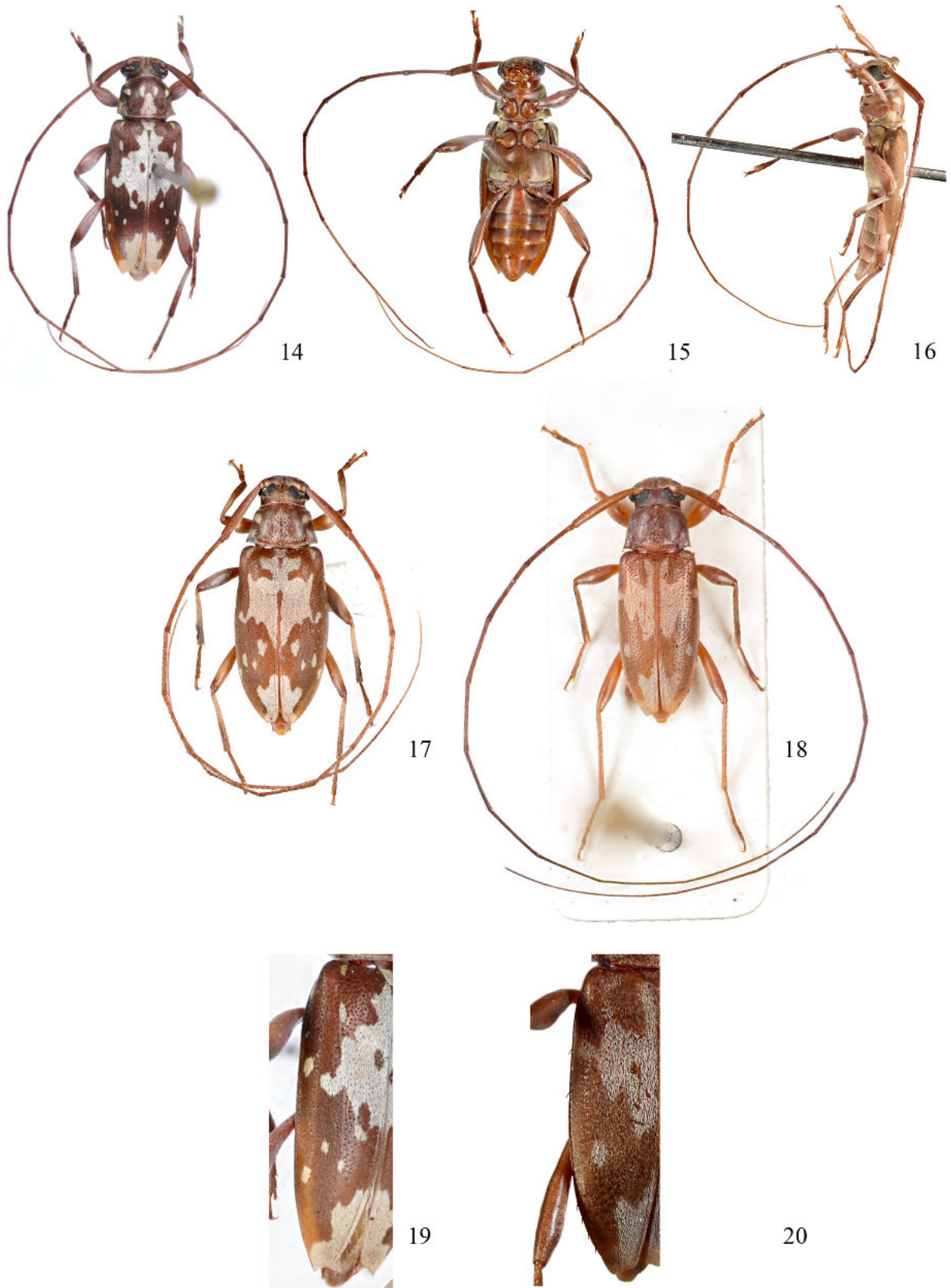


FIGURES 1–5. *Onocephala chicomendes* sp. nov. 1–4, holotype, male, 1, dorsal view, 2, lateral view, 3, ventral view, 4, detail of head in frontal view; 5, paratype, female, dorsal view.



FIGURES 6–13. 6–8, dorsal view; 6, *Onocephala diophthalma*; 7, *O. rugicollis*; 8, *O. tepahi*. 9–11, lateral view; 9, *O. diophthalma*; 10, *O. rugicollis*; 11, *O. tepahi*. 12–13, detail of head in frontal view; 12, *O. diophthalma*; 13, *O. tepahi*.

Female paratype (Fig. 5). Differs from the male by front without carina separating it from genae; distance between apex of tubercles seven times width of an upper ocular lobe; antennomeres V–XI decreasing in length; last visible urotergite trapezoidal, slightly curved ventrally, with sinuous apex; last visible urosternite trapezoidal, with longitudinal median sulcus and apex slightly excavated.



FIGURES 14–20. 14–17, *Lepturges (L.) batesi* sp. nov., holotype, male, 14, dorsal view, 2, ventral view, 3, lateral view, 17, paratype, female, dorsal view; 18, *Lepturges (Chaeturges) dorsalis*, dorsal view; 19–20, detail of elytron, 19, *Lepturges (L.) batesi* sp. nov., external margin without short bristles; 20, *Lepturges (Chaeturges) dorsalis*, external margin with short bristles.

Measurements, in mm. Holotype male/ paratype female. Total length, 17.4/19.3; prothorax length, 3.0/3.5; prothorax width at its widest point, 3.7/4.3; elytral length, 11.05/13.4; humeral width, 6.1/6.7.

Etymology. We name this species for Francisco Alves Mendes Filho, better known as Chico Mendes (December 15, 1944 – December 22, 1988), a Brazilian rubber tapper and environmentalist. He fought to preserve the Amazon Rainforest, and advocated for the human rights of Brazilian peasants and indigenous peoples. He was murdered by a rancher on December 22, 1988. The epithet is a noun in apposition.

Type material. Holotype male, BRAZIL, Rio de Janeiro: Itatiaia (Parque Nacional de Itatiaia, 816 m), VI.1973, L. Zikán leg. (MNRJ). Paratype female: BRAZIL, Rio de Janeiro: Itatiaia (Estação Biológica), 21.I.1930, J.F. Zikán leg. (MNRJ).

Remarks. Based on the pattern of the elytra, three groups of species can be defined in *Onocephala*: one group with a premedian yellow spot of pubescence (*Onocephala chicomendes* **sp. nov.** (Figs. 1, 5), *O. diophthalma* (Perty, 1832) (Figs. 6, 9), *O. tepahi* Dillon & Dillon, 1946 (Figs 8, 11), *O. rugicollis* (Thomson, 1857) (Figs. 7, 10), another group with only longitudinal stripes of pubescence (*O. aulica* Lucas, 1857, *O. suturalis* (Bates, 1887), *O. thomsoni*, *O. vitipennis*), and the last with an oblique median macula and longitudinal stripes of pubescence (*O. lacordairei* Dillon & Dillon, 1946, *O. obliquata* Lacordaire, 1872).

Onocephala chicomendes **sp. nov.** (Figs. 1–5) differs from *O. diophthalma* (Figs. 6, 9, 12), *O. tepahi* (Figs. 8, 11) and *O. rugicollis* (Figs. 7, 10) in the yellow spot on the elytra that does not reach the external margin and in the fine shallow punctuation on the base of the elytra; in the other three species the yellow spot reaches the external margin of the elytra and the punctuation on the base of the elytra is deep and coarse. *Onocephala chicomendes* **sp. nov.** also differs from *O. diophthalma* and *O. tepahi* in having the IV antennomere unicolor (in the other two species the basal half is yellowish). It differs from *O. tepahi* in the well-separated antennal tubercles, with the distance between them greater than the width of an upper lobe. In *O. tepahi* the tubercles are very close, separated by less than the width of an upper lobe.

Subfamily Cerambycinae

TRIBE CERAMBYCINI

SUBTRIBE CERAMBYCINA

1. *Jupoata robusta* Martins & Monné, 2002 (Fig. 21)

Jupoata robusta Martins & Monné, 2002: 203.

Distribution. Brazil (Maranhão, Pernambuco, Bahia, Goiás, Minas Gerais to Santa Catarina).

Specimens examined. BRAZIL, Rio de Janeiro: Itatiaia (Parque Nacional do Itatiaia), 750 m, 1 male, 23.IX.2011, M.L. & M.A. Monné col; 1 male, 28.X.2011, R. Cavichioli col.

TRIBE CLYTINI

2. *Megacyllene anacantha* (Chevrolat, 1862)

Cyllene anacantha Chevrolat, 1862: 52.

Clytus anacanthus; Gemminger & Harold, 1872: 2923 (cat.).

Megacyllene anacantha; Monné, M. A., 1993i: 2 (cat.).

Distribution. Brazil (Minas Gerais, Espírito Santo, Rio de Janeiro, São Paulo, Paraná, Santa Catarina, Rio Grande do Sul), Argentina (Salta).

Specimen examined. BRAZIL, Rio de Janeiro: Itatiaia (Parque Nacional do Itatiaia), Ponte Alta, 2500 m, 1 female, 04.II.2016, A. Martins.

3. *Megacyllene insignita* (Perroud, 1855)

Clytus insignitus Perroud, 1855: 388.

Cyllene insignita; Chevrolat, 1862: 53.

Megacyllene insignita; Biezanko & Bosq, 1956: 8 (distr.).

Distribution. Brazil (Minas Gerais, Paraná, Santa Catarina, Rio Grande do Sul), Argentina (Córdoba, San Luis, Santa Fé, Corrientes, Entre Ríos, Buenos Aires), Uruguay.

Specimen examined. BRAZIL, Itatiaia (Parque Nacional do Itatiaia), Trilha Abrigo Rebouças, 2400 m, 1 male, 01–03.I.2016, Projeto Biota FAPERJ.

TRIBE COMPSOCERINI Thomson, 1864

4. *Aglaoschema prasinipenne* (Lucas, 1857) (Fig. 22)

Orthostoma prasinipennis Lucas in Castelnau, 1857: 185.

Aglaoschema prasinipenne; Napp, 1994: 659.

Orthostoma nigricorne Bates, 1870: 393.

Orthoschema tibiale Aurivillius, 1920: 364.

Distribution. Brazil (Bahia, Minas Gerais, Espírito Santo, Rio de Janeiro, São Paulo, Paraná, Santa Catarina, Rio Grande do Sul), Bolivia (Santa Cruz).

Specimen examined. BRAZIL, Rio de Janeiro: Itatiaia (Parque Nacional do Itatiaia), 750 m, 1 female, 18–21.X.2012, J.P. Botero, V. Machado, A. Carelli, M. Cupello & R. Souza col.

5. *Chlorethe brachyptera* Zajciw, 1963 (Fig. 23)

Chlorethe brachyptera Zajciw, 1963b: 416.

Distribution. Brazil (Mato Grosso do Sul, Paraná, Santa Catarina).

New record for Rio de Janeiro State and for PNI.

Specimen examined. BRAZIL, Rio de Janeiro: Itatiaia (Parque Nacional do Itatiaia), 750 m, 1 male, 27.II – 01.III.2012, J.P. Botero, V. Machado, A. Carelli, M. Cupello & R. Souza col.

TRIBE EBURIINI

6. *Eburia charmata* Martins, 1981 (Fig. 24)

Eburia charmata Martins, 1981a: 207.

Distribution. Brazil (Espírito Santo).

New record for Rio de Janeiro State and for PNI.

Specimen examined. BRAZIL, Rio de Janeiro: Itatiaia (Parque Nacional do Itatiaia), 750 m, 1 female, 29.X.2011, R. Cavichioli col.

7. *Eburodacrys monticola* Monné & Martins, 1973 (Fig. 25)

Eburodacrys monticola Monné & Martins, 1973: 149.

Distribution. Brazil (Minas Gerais, Espírito Santo, Rio de Janeiro).

Specimen examined. BRAZIL, Rio de Janeiro: Itatiaia (Parque Nacional do Itatiaia), 750 m, 1 male, 23.IX.2011, M.L. & M.A. Monné col.

8. *Pantomallus pallidus* Aurivillius, 1923

Pantomallus pallidus Aurivillius, 1923: 440.

Distribution. Brazil (Bahia to Santa Catarina), Paraguay.

Specimens examined. BRAZIL, Rio de Janeiro: Itatiaia (Parque Nacional do Itatiaia), 750 m, 2 males, 06–08.XI.2009, M.L. & M.A. Monné col; 1 female, 11–13.XI.2011, J.P. Botero, V. Machado, A. Carelli, M. Cupello, M. Simões & R. Souza col; 1 female, 18–21.X.2012, J.P. Botero, V. Machado, A. Carelli, M. Cupello & R. Souza col.

9. *Quiacaua abacta* (Martins, 1981) (Fig. 26)

Eburia abacta Martins, 1981a: 206.

Quiacaua abacta; Martins, 1997: 71.

Distribution. Brazil (Espírito Santo, Rio de Janeiro).

Specimen examined. BRAZIL, Rio de Janeiro: Itatiaia (Parque Nacional do Itatiaia), 750 m, 1 female, 18–21.X.2012, J.P. Botero, V. Machado, A. Carelli, M. Cupello & R. Souza col.

TRIBE NEOIBIDIONINI

SUBTRIBE COMPSINA

10. *Heterachthes dimidiatus* (Thomson, 1865)

Ibidion dimidiatum Thomson, 1865: 571.

Ibidion (Brydaeon) dimidiatum; Thomson, 1867: 137.

Compsa dimidiata; Lacordaire, 1869: 333.

Heterachthes dimidiatus; Martins, 1962: 1.

Distribution. Brazil (Espírito Santo, Rio de Janeiro, Paraná), Paraguay.

Specimen examined. BRAZIL. Rio de Janeiro: Itatiaia (Parque Nacional do Itatiaia), 1 female, 01.X.–01.XI.2015, Projeto Biota FAPERJ.

SUBTRIBE NEOIBIDIONINA

11. *Compsibidion truncatum* (Thomson, 1865) (Fig. 27)

Ibidion truncatum Thomson, 1865: 574.

Compsibidion truncatum; Martins, 1969: 714.

Ibidion albo-cinctum Thomson, 1865: 574.

Ibidion (Compsibidion) lycoris Thomson, 1867

Distribution. Brazil (Goiás, Bahia to Rio Grande do Sul), Bolivia, Paraguay, Argentina (Misiones).

Specimen examined. BRAZIL, Rio de Janeiro: Itatiaia (Parque Nacional do Itatiaia), 750 m, 1 female, 18–21.X.2012, J.P. Botero, V. Machado, A. Carelli, M. Cupello & R. Souza col.

SUBTRIBE TROPIDINA

12. *Minibidion bondari* (Melzer, 1923)

Ibidion bondari Melzer, 1923: 7.

Minibidion bondari; Martins, 1968: 337.

Distribution. Brazil (Mato Grosso, Bahia to Rio Grande do Sul).

Specimens examined. BRAZIL, Rio de Janeiro: Itatiaia (Parque Nacional do Itatiaia), 750 m, 2 males, 15–19.XI.2012, M.L. Monné, M.A. Monné, J.P. Botero, V. Machado, A. Carelli col.

TRIBE RHINOTRAGINI

13. *Chariergodes flava* (Zajciw, 1963) (Fig. 28)

Ommata (Chariergodes) flava Zajciw, 1963a: 243.

Distribution. Brazil (Bahia, Minas Gerais, Espírito Santo, Rio de Janeiro).

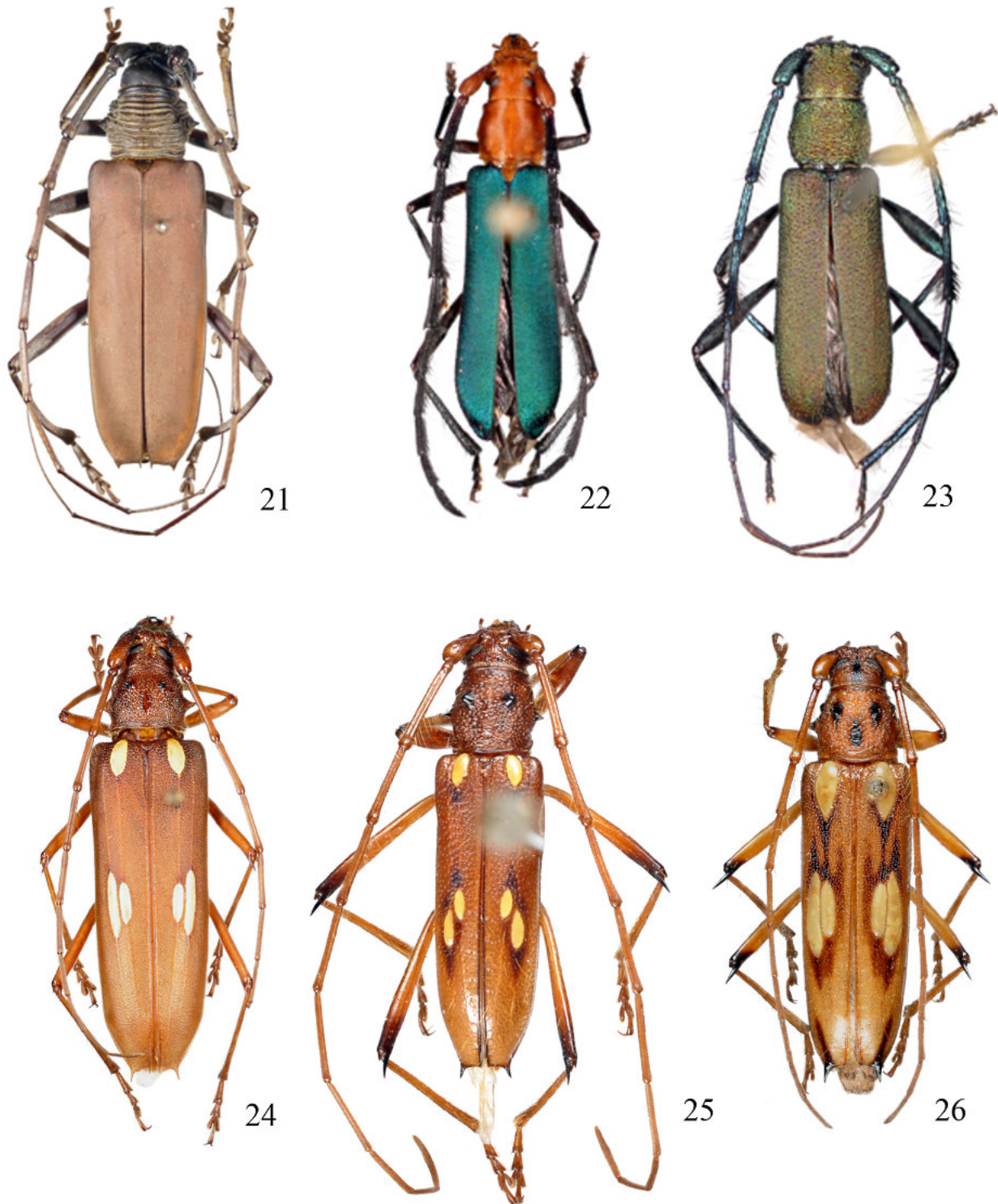
Specimen examined. BRAZIL, Rio de Janeiro: Itatiaia (Parque Nacional do Itatiaia), 750 m, 1 female, 23.IX.2011, M.L. Monné & M.A. Monné col.

14. *Eclipta brachialis* (Bates, 1873)

Ommata (Eclipta) brachialis Bates, 1873: 31.

Distribution. Brazil (Bahia, Minas Gerais, Espírito Santo, Rio de Janeiro, São Paulo).

Specimen examined. BRAZIL. Rio de Janeiro: Itatiaia (Parque Nacional do Itatiaia), 1 male, 1 female, 01.X.–01.XI.2015, Projeto Biota FAPERJ.



FIGURES 21–26. 21, *Jupoata robusta* Martins & Monné, 2002; 22, *Aglaoschema prasinipenne* (Lucas, 1857); 23, *Chlorethe brachyptera* Zajciw, 1963; 24, *Eburia charmata* Martins, 1981; 25, *Eburodacrys monticola* Monné & Martins, 1973; 26, *Quiacaua abacta* (Martins, 1981).

15. *Eclipta eirene* (Newman, 1841) (Fig. 29)

Odontocera eirene Newman, 1841: 92.

Ommata (Eclipta) eirene; Bates, 1873: 29.

Distribution. Brazil (Bahia to Santa Catarina).

Specimen examined. BRAZIL, Rio de Janeiro: Itatiaia (Parque Nacional do Itatiaia), 750 m, 1 female, 15–19.XI.2012, M.L. Monné, M.A. Monné, J.P. Botero, V. Machado, A. Carelli col.

16. *Ecliptoides eunomia* (Newman, 1841)

Odontocera eunomia Newman, 1841: 92.

Ommata (Eclipta) eunomia; Bates, 1873: 31.

Ecliptoides eunomia; Martins, Santos-Silva & Clarke, 2012: 483, figs. 8, 9.

Distribution. Brazil (Goiás, Bahia, Minas Gerais, Espírito Santo, Rio de Janeiro, São Paulo, Santa Catarina, Rio Grande do Sul), Argentina (Misiones).

Specimen examined. BRAZIL, Rio de Janeiro: Itatiaia (Parque Nacional do Itatiaia, Lago Azul), 750 m, 1 male, X–XI.2015, Malaise, Projeto Biota FAPERJ.

17. *Epimelitta eupheme* (Lameere, 1884)

Charis eupheme Lameere, 1884: 89.

Epimelitta eupheme; Aurivillius, 1912: 284.

Distribution. Brazil (Bahia to Santa Catarina).

Specimen examined. BRAZIL, Rio de Janeiro: Itatiaia (Parque Nacional do Itatiaia), 1 female, 800 m, 2–6.XI.2015, Projeto Biota FAPERJ.

18. *Ischasia rufina* Thomson, 1864 (Fig. 30)

Ischasia rufina Thomson, 1864: 163.

Distribution. Costa Rica, Panamá, Brazil (Goiás, Minas Gerais to Rio Grande do Sul).

Specimen examined. BRAZIL, Rio de Janeiro: Itatiaia (Parque Nacional do Itatiaia), 1250 m, 1 female, 30.IX–02.X.2010, M.L. Monné & M.A. Monné col.

SUBFAMILY LAMIINAE

TRIBE ACANTHOCININI

19. *Anisopodus bellus* Martins & Monné, 1974 (Fig. 31)

Anisopodus bellus Martins & Monné, 1974: 17.

Distribution. Brazil (Minas Gerais to São Paulo).

Specimen examined. BRAZIL, Rio de Janeiro: Itatiaia (Parque Nacional do Itatiaia), 750 m, 1 male, 29.X.2011, R. Cavichioli col.

20. *Chaetacosta vittithorax* Gilmour, 1961

Chaetacosta vittithorax Gilmour, 1961

Distribution. Brazil (Minas Gerais, São Paulo, Santa Catarina).

New record for Rio de Janeiro State and for PNI.

Specimen examined. BRAZIL, Rio de Janeiro: Itatiaia (Parque Nacional do Itatiaia), (Casa do Pesquisador, 800 m), 1 male, 02–06.XI.2015, Projeto Biota FAPERJ.

21. *Hyperplatys cana* (Bates, 1863)

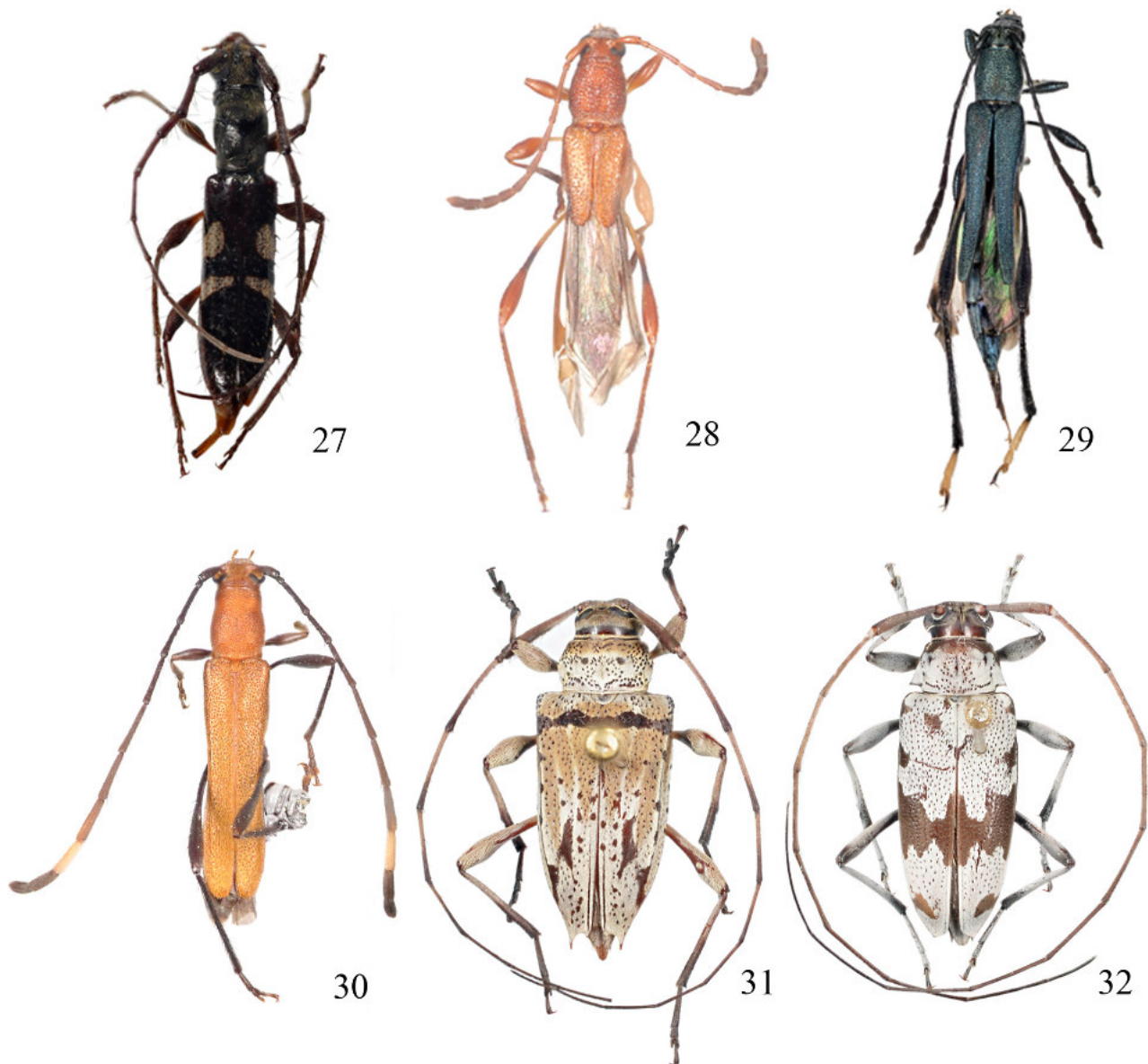
Anisopodus canus Bates, 1863: 288.

Hyperplatys cana; Gilmour, 1965: 592.

Hyperplatys spinipennis Fisher, 1938: 146.

Distribution. Brazil (Rio de Janeiro, São Paulo, Paraná, Santa Catarina).

Specimen examined. BRAZIL, Rio de Janeiro: Itatiaia (Parque Nacional do Itatiaia), Brejo da Lapa, 2000 m, 1 female, 4.XI.2015, Projeto Biota FAPERJ.



FIGURES 27–32. 27, *Compsibidion truncatum* (Thomson, 1865); 28, *Chariergodes flava* (Zajciw, 1963); 29, *Eclipta eirene* (Newman, 1841); 30, *Ischasia rufina* Thomson, 1864; 31, *Anisopodus bellus* Martins & Monné, 1974; 32, *Lepturges* (*Lepturges*) *punctatissimus* Monné, 1976.

22. *Lepturges* (*Lepturges*) *punctatissimus* Monné, 1976 (Fig. 32)

Lepturges punctatissimus Monné, 1976: 370.

Distribution. Brazil (Espírito Santo to Santa Catarina).

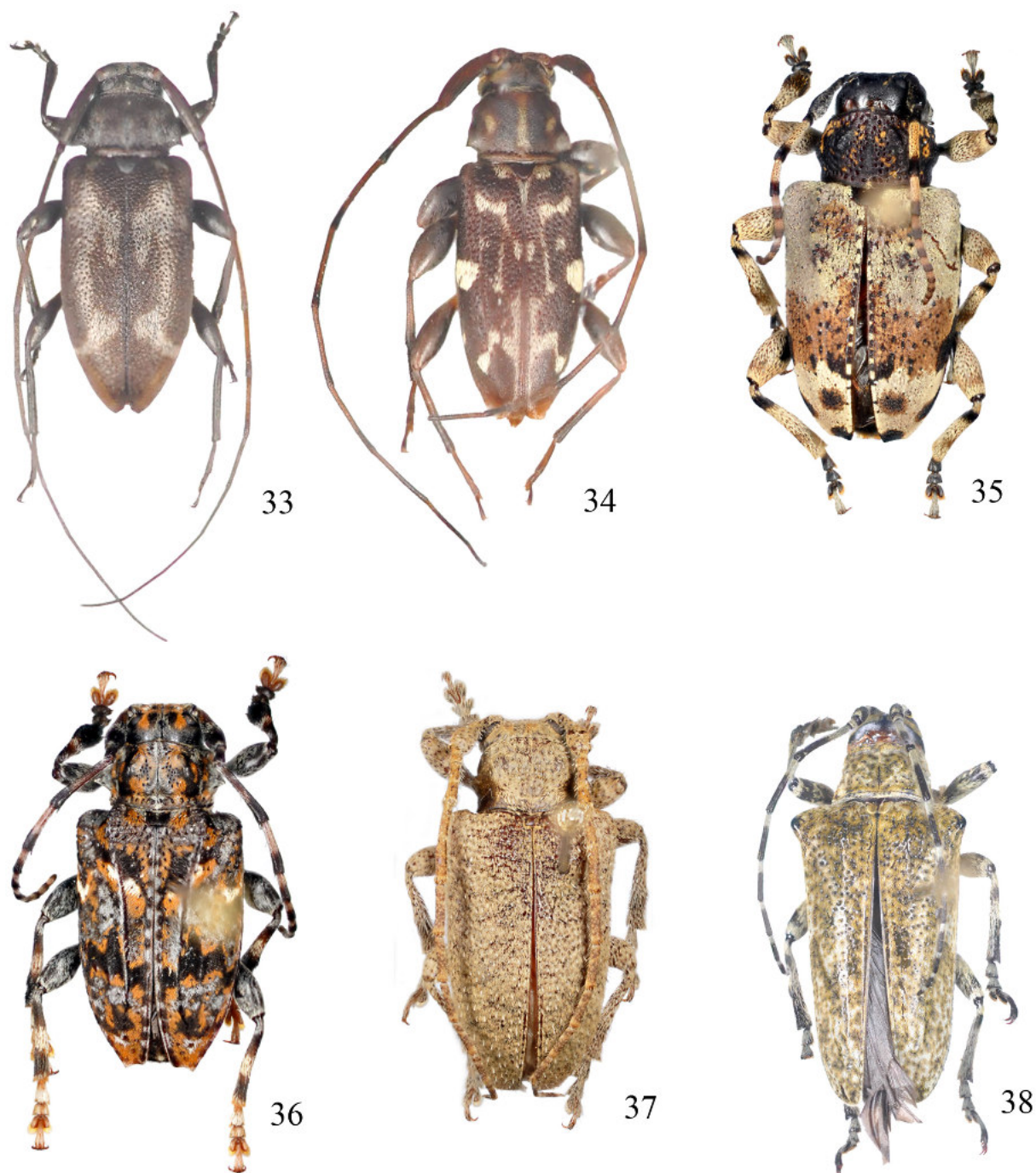
Specimens examined. BRAZIL, Rio de Janeiro: Itatiaia (Parque Nacional do Itatiaia), 750 m, 1 male, 27.X.2011, R. Cavichioli col.; 1 male, 18–21.X.2012, J.P. Botero, V. Machado, A. Carelli, M. Cupello & R. Souza col.

23. *Ozineus bicristatus* Melzer, 1935

Ozineus bicristatus Melzer, 1935: 200.

Distribution. Brazil (Minas Gerais, Rio de Janeiro, São Paulo).

Specimen examined. BRAZIL, Rio de Janeiro: Itatiaia (Parque Nacional do Itatiaia), 1 specimen, 1800 m, 15–19.XI.2012, M.L. Monné & M.A. Monné col.



FIGURES 33–38. 33, *Urgleptes puerulus* (Melzer, 1932); 34, *Urgleptes villiersi* Gilmour, 1962; 35, *Eupromerella nigroapicalis* (Aurivillius, 1916); 36, *Psapharochrus flavitarsis* (Fuchs, 1962); 37 *Aerenea setifera* Thomson, 1868; 38, *Hypsioma attalia* Dillon & Dillon, 1945.

24. *Pentheochaetes mysticus* Melzer, 1932

Pentheochaetes mysticus Melzer, 1932b: 433, pl. 7, fig. 8.

Distribution. Brazil (Espírito Santo, Rio de Janeiro, São Paulo, Paraná, Santa Catarina, Rio Grande do Sul), Paraguay, Argentina.

Specimen examined. BRAZIL, Rio de Janeiro: Itatiaia (Parque Nacional do Itatiaia, Casa do Pesquisador, 750 m), 1 male, 04–07.IV.2016, Projeto Biota FAPERJ.

25. *Urgleptes mancus* (Melzer, 1932)

Lepturges mancus Melzer, 1932a: 229, pl. 3, fig. 4.

Urgleptes mancus; Gilmour, 1959: 8.

Distribution. Brazil (Rio de Janeiro to Rio Grande do Sul), Argentina (Buenos Aires), Uruguay.

Specimen examined; BRAZIL, Rio de Janeiro: Itatiaia (Parque Nacional do Itatiaia), 750 m, 1 female, 02–06.XI.2015, Projeto Biota FAPERJ.

26. *Urgleptes puerulus* (Melzer, 1932) (Fig. 33)

Lepturges puerulus Melzer, 1932a: 233.

Urgleptes puerulus; Monné, 1976: 357.

Distribution. Brazil (Bahia, Minas Gerais, Espírito Santo, São Paulo, Rio Grande do Sul).

New record for Rio de Janeiro State and for PNI.

Specimen examined. BRAZIL, Rio de Janeiro: Itatiaia (Parque Nacional do Itatiaia), 750 m, 1 male, 18–21.X.2012, J.P. Botero, V. Machado, A. Carelli, M. Cupello & R. Souza col.

TRIBE ACANTHODERINI

27. *Aegoschema adpersum* (Thomson, 1861)

Aegomorphus adpersus Thomson, 1861: 337.

Aegoschema adpersum; Lane, 1938: 109.

Distribution. Brazil (Bahia to São Paulo).

Specimens examined. BRAZIL, Rio de Janeiro: Itatiaia (Parque Nacional do Itatiaia), 750 m, 1 female, 15–19.XI.2012, M.L. Monné, M.A. Monné, J.P. Botero, V. Machado, A. Carelli col.; (Lago Azul), 1 male, 02–06.XI.2015, Projeto Biota FAPERJ (Casa do Pesquisador, 800 m); 1 female, 02–06.XI.2015, Projeto Biota FAPERJ; 1 male, 02–05.II.2016, Projeto Biota FAPERJ.

28. *Eupromerella nigroapicalis* (Aurivillius, 1916) (Fig. 35)

Scleronotus nigroapicalis Aurivillius, 1916: 356.

Eupromerella nigroapicalis; Julio, 1998: 2.

Distribution. Brazil (Bahia to Santa Catarina).

Specimen examined. BRAZIL, Rio de Janeiro: Itatiaia (Parque Nacional do Itatiaia), 750 m, 1 female, 18–21.X.2012, J.P. Botero, V. Machado, A. Carelli, M. Cupello & R. Souza col.

29. *Psapharochrus flavitarsis* (Fuchs, 1962) (Fig. 36)

Acanthoderes (Psapharochrus) flavitarsis Fuchs, 1962: 322.

Psapharochrus flavitarsis; Monné, 2005: 204.

Distribution. Brazil (Bahia to Santa Catarina), Bolivia (Santa Cruz).

Specimen examined. BRAZIL, Rio de Janeiro: Itatiaia (Parque Nacional do Itatiaia), 750 m, 1 female, 15–19.XI.2012, M.L. Monné, M.A. Monné, J.P. Botero, V. Machado, A. Carelli col.

30. *Trichoanoreina albomaculata* Julio & Monné, 2005

Trichoanoreina albomaculata Julio & Monné, M. A., 2005: 447.

Distribution. Brazil (Espírito Santo, São Paulo).

New record for Rio de Janeiro State and for PNI.

Specimen examined. BRAZIL, Rio de Janeiro: Itatiaia (Parque Nacional do Itatiaia, Trilha Rui Braga), 1 female, 02–04.XI.2015, Projeto Biota FAPERJ.

TRIBE AERENICINI

31. *Phaula thomsoni* Lacordaire, 1872

Phaula thomsoni Lacordaire, 1872: 898.

Cymbalia thomsoni; Lane, 1973: 417.

Ochraesius sticticus Pascoe, 1888: 511, pl. 14, fig. 8.

Distribution. Brazil (Pará, Maranhão, Goiás, Mato Grosso do Sul, Bahia to Rio Grande do Sul), Bolivia (Santa Cruz), Paraguay, Argentina (Misiones).

Specimen examined. BRAZIL, Rio de Janeiro: Itatiaia (Parque Nacional do Itatiaia, Casa do Pesquisador, 750 m), 1 female. 01–03.I.2016, Projeto Biota FAPERJ.

TRIBE COLOBOTHEINI

32. *Colobothea rubroornata* Zajciw, 1962

Colobothea rubroornata Zajciw, 1962: 285.

Distribution. Brazil (Espírito Santo to Santa Catarina), Paraguay, Bolivia (Cochabamba, Santa Cruz).

Specimen examined. BRAZIL, Rio de Janeiro: Itatiaia (Parque Nacional do Itatiaia), 750 m, 1 female, 22–24.II.2013, J.P. Botero, V. Machado, A. Carelli, M. Cupello & R. Souza col.

33. *Colobothea seriatomaculata* Zajciw, 1962

Colobothea seriatomaculata Zajciw, 1962: 283

Distribution. Brazil (Minas Gerais, Espírito Santo, Rio de Janeiro, São Paulo, Paraná, Santa Catarina, Rio Grande do Sul), Paraguay, Argentina.

Specimens examined. BRAZIL. Minas Gerais: Itamonte (Parque Nacional do Itatiaia), Brejo da Lapa, 1 male, 01.X.–03.XI.2015, Projeto Biota FAPERJ.

TRIBE COMPSOSOMATINI

34. *Aerenea setifera* Thomson, 1868 (Fig. 37)

Aerenea setifera Thomson, 1868: 94.

Distribution. Brazil (Rio de Janeiro, São Paulo).

Specimens examined. BRAZIL, Rio de Janeiro: Itatiaia (Parque Nacional do Itatiaia), 750 m, 2 males, 18–21.X.2012, J.P. Botero, V. Machado, A. Carelli, M. Cupello & R. Souza col.

TRIBE DESMIPHORINI

35. *Dolichestola vittipennis* Breuning, 1948

Dolichestola vittipennis Breuning, 1948: 26.

Distribution. Brazil (Rio de Janeiro).

Specimen examined. BRAZIL, Rio de Janeiro: Itatiaia (Parque Nacional do Itatiaia, Casa do Pesquisador, 750 m), 1 female, 04–07.IV.2016, Projeto Biota FAPERJ

TRIBE HEMILOPHINI

36. *Apagomera seclusa* Lane, 1965

Apagomera seclusa Lane, 1965: 326.

Distribution. Brazil (Minas Gerais).

Specimen examined. BRAZIL. Rio de Janeiro: Itatiaia (Parque Nacional do Itatiaia, Casa do Pesquisador, 750 m), 1 female, 0–04.XI.2015, Projeto Biota FAPERJ.

TRIBE MONOCHAMINI

37. *Taeniotes monnei* Martins & Santos-Silva, 2012

Taeniotes monnei Martins & Santos-Silva, 2012: 50, figs. 22, 23.

Distribution. Brazil (Pernambuco, Bahia, to Rio Grande do Sul), Argentina (Misiones).

Mentioned for the PNI as *Taeniotes amazonum* Thomson, 1857 (Monné *et al.*, 2012: 66). The correct name is *Taeniotes monnei*.

TRIBE ONCIDERINI

38. *Hypsioma attalia* Dillon & Dillon, 1945 (Fig. 38)

Hypsioma attalia Dillon & Dillon, 1945: 45.

Distribution. Brazil (Rio de Janeiro).

Specimen examined. BRAZIL, Rio de Janeiro: Itatiaia (Parque Nacional do Itatiaia), 750 m, 1 female, 18–21.X.2012, J.P. Botero, V. Machado, A. Carelli, M. Cupello & R. Souza col.

39. *Oncideres glebulenta* Martins, 1981

Oncideres glebulenta Martins, 1981b: 231.

Distribution. Brazil (Goiás, São Paulo), Argentina (Misiones).

Specimen examined. BRAZIL, Rio de Janeiro: Itatiaia (Parque Nacional do Itatiaia), 750 m, 1 male, 11–13.XI.2011, J.P. Botero, V. Machado, A. Carelli, M. Cupello, M. Simões & R. Souza col.

Acknowledgments

We are grateful to Léo Nascimento, research director of the PNI, for encouraging research in the PNI; to Dr. Janet Reid for revising the English text; and to FAPERJ for grant no. E-26/010.001636/2014.

References

- Aurivillius, C. (1912) *Coleopterorum Catalogus*, pars 39, Cerambycidae: Cerambycinae. Junk, W., Berlin, 574 pp.
- Aurivillius, C. (1916) Neue oder wenig bekannte Coleoptera Longicornia. 16. *Arkiv för Zoologi*, 10 (19), 335–360.
- Aurivillius, C. (1920) Neue oder wenig bekannte Coleoptera Longicornia. 17. *Arkiv för Zoologi*, 13 (9), 361–403.
<http://dx.doi.org/10.5962/bhl.part.20147>
- Aurivillius, C. (1923) Neue oder wenig bekannte Coleoptera Longicornia. 19. *Arkiv för Zoologi*, 15 (25), 437–479.
- Bates, H.W. (1863) Contributions to an insect fauna of the Amazon Valley. Coleoptera: Longicornes. *The Annals and Magazine of Natural History*, (3) 12, 275–288.
- Bates, H.W. (1870) Contributions to an insect fauna of the Amazon Valley (Coleoptera: Cerambycidae). *The Transactions of the Entomological Society of London*, 1870, 243–335; 391–444.
<http://dx.doi.org/10.1111/j.1365-2311.1870.tb01879.x>
- Bates, H.W. (1873) Notes on the longicorn Coleoptera of tropical America. *The Annals and Magazine of Natural History*, (4) 11, 21–45.
<http://dx.doi.org/10.1080/00222937308696758>
- Bezark, L. (2013) Distributional records and updates to type repositories for some New World Cerambycidae (Coleoptera, Cerambycidae). *Les Cahiers Magellanes*, 11, 39–58.
- Biezanko, C.M. & Bosq, J.M. (1956) Cerambycidae de Pelotas e seus arredores. *Agros*, 10 (3–4), 3–15.
- Breuning, S. (1948) Nouvelles formes de Lamiaires (Deuxième partie). *Bulletin du Muséum d'Histoire Naturelle de Belgique*, 24 (47), 1–4.
- Chevrolat, L.A. (1862) Description des clytides du Brésil. *Annales de la Société Entomologique de France*, (4) 2, 49–67.
- Dillon, L.S. & Dillon, E.S. (1945) The tribe Onciderini (Coleoptera: Cerambycidae). Part I. *Scientific Publications of the Reading Public Museum*, 5, xv+186 pp.
- Instituto Chico Mendes de Conservação da Biodiversidade (ICMBio) (2013) Available at <http://www.icmbio.gov.br/parnaitatiaia/> (Accessed April 2016)
- Fisher, W.S. (1938) New neotropical Cerambycidae. II. *Revista de Entomologia*, 8 (1–2), 135–153.

- Fuchs, E. (1962) Neue Cerambyciden aus der ehemaligen Sammlung Dr. Itzinger. 2 Theil (Col.) *Entomologischen Arbeiten aus dem Museum G. Frey*, 13 (2), 321–324.
- Gemminger, M. & Harold, E. (1872) *Catalogus Coleopterorum hucusque descriptorum synonymicus et systematicus*. Gummi, Monachii, 9, pp. 2669–2988.
- Gilmour, E.F. (1959) On the Neotropical Acanthocinini V (Coleoptera, Cerambycidae, Lamiinae). New species of *Lepturges* Bates and *Urgleptes* Dillon. *Opuscula Zoologica*, 28, 1–10.
- Gilmour, E.F. (1961) On the Neotropical Acanthocinini IX (Coleoptera, Cerambycidae). Some new genera and species III. *Studia Entomologica*, 4, 347–368.
- Gilmour, E.F. (1965) *Catalogue des Lamiaires du Monde* (Col., Cerambycidae). 8 Lief. Museum G. Frey, Tutzing bei München pp. 559–655.
- Julio, C.E.A. (1998) *Scleronotus* White, 1855 (Coleoptera, Cerambycidae, Lamiinae, Acanthoderini): espécies novas e transferências. *Boletim do Museu Nacional, Zoologia*, 386, 1–15.
- Julio, C.E.A. & Monné, M.A. (2005b) Novo gênero de Acanthoderini (Coleoptera, Cerambycidae). *Revista Brasileira de Entomologia*, 49 (4), 446–447.
<http://dx.doi.org/10.1590/s0085-56262005000400003>
- Lacordaire, J.T. (1869) *Histoire Naturelle des Insectes. Genera des Coléoptères, ou exposé méthodique et critique de tous les genres proposés jusqu'ici dans cet ordre d'insectes*. Librairie Encyclopédique de Roret, Paris, 8, 552 pp., 9 (1), 409 pp.
- Lacordaire, J.T. (1872) *Histoire Naturelle des Insectes. Genera des Coléoptères, ou exposé méthodique et critique de tous les genres proposés jusqu'ici dans cet ordre d'insectes*. Librairie Encyclopédique de Roret, Paris, 9 (2), 411–930.
<http://dx.doi.org/10.5962/bhl.title.67686>
- Lameere, A.A. (1884) Longicornes recueillis par feu Camille Van Volxem au Brésil et a La Plata. *Annales de la Société Entomologique de Belgique*, 28, 83–99.
- Lane, F. (1938) Notas sobre Lamiideos neotrópicos e descrição de espécies novas (Col., Lamiidae). II. *Boletim Biológico*, (n.s.)3 (3–4), 107–112.
- Lane, F. (1965) Cerambycoidea Neotropica nova VI (Coleoptera). *Studia Entomologica* 8 (1–4), 269–336.
- Lane, F. (1973) Cerambycoidea Neotropica nova IX (Coleoptera). *Studia Entomologica*, 16 (1–4), 371–438.
- Lucas, P.H. (1857) Entomologie. In: *Animaux nouveaux ou rares recueillis pendant l'expédition dans les parties centrales de l'Amérique du Sud, de Rio de Janeiro a Lima, et de Lima au Pará, exécutée par ordre du Gouvernement Français pendant les années 1843 a 1847, sous la direction du Comte F. de Castelnau*. Bertrand, Paris, 204 pp.
- Martins, U.R. (1962) Ibdionini (Coleoptera, Cerambycinae) XVII. Redescrições e espécies novas. *Papéis Avulsos do Departamento de Zoologia*, 15 (1), 1–14.
- Martins, U.R. (1968) Monografia da Tribo Ibdionini (Coleoptera, Cerambycinae). Parte II. *Arquivos de Zoologia*, 16 (2), 321–630.
<http://dx.doi.org/10.11606/issn.2176-7793.v16i2p321-630>
- Martins, U.R. (1969) Monografia da Tribo Ibdionini (Coleoptera, Cerambycinae). Parte III. *Arquivos de Zoologia*, 16 (3), 631–877.
<http://dx.doi.org/10.11606/issn.2176-7793.v16i3p631-877>
- Martins, U.R. (1981a) Novos longicórneos neotrópicos da coleção Viehmann, com notas sinonímicas (Coleoptera, Cerambycidae). *Papéis Avulsos de Zoologia*, 34 (20), 205–219.
- Martins, U.R. (1981b) Descrições e notas sobre Onciderini II (Coleoptera, Cerambycidae, Lamiinae). *Papéis Avulsos de Zoologia*, 34 (21), 221–234.
- Martins, U.R. (1997) Contribuições para uma revisão das espécies sul-americanas da Tribo Eburini (Coleoptera, Cerambycidae). *Revista Brasileira de Entomologia*, 41 (1), 57–83.
- Martins, U.R. & Monné, M.A. (1974) Contribuição ao conhecimento dos Acanthocinini (Coleoptera, Cerambycidae, Lamiinae). *Papéis Avulsos de Zoologia*, 28 (2), 11–30.
- Martins, U.R. & Monné, M.A. (2002) Tribo Cerambycini. In: Martins, U.R. (org.), *Cerambycidae Sul-Americanos (Coleoptera) Taxonomia*. Sociedade Brasileira de Entomologia, São Paulo, 4, pp. 145–248.
- Martins, U.R. & Santos-Silva, A. (2012) On some species of *Taeniotes* Audinet-Serville, 1835 (Coleoptera, Cerambycidae, Lamiinae). *The Pan-Pacific Entomologist*, 88 (1), 35–57.
<http://dx.doi.org/10.3956/2012-19.1>
- Martins, U.R., Santos-Silva, A. & Clarke, R.O.S. (2012) Contribuição para o estudo dos Rhinotragini (Coleoptera, Cerambycidae). VI. *Ecliptoides* Tavakilian & Peñaherrera-Leiva, 2005. *Papéis Avulsos de Zoologia*, 52 (38), 477–506.
<http://dx.doi.org/10.1590/S0031-10492012021800001>
- Melzer, J. (1923) Longicórneos (Col.) do Brazil, novos ou pouco conhecidos. *Notas Preliminares do Museu Paulista*, 2 (4), 1–10.
- Melzer, J. (1932a) Vinte espécies novas de cerambycideos neotrópicos, principalmente do Brazil. *Revista de Entomologia*, 2 (2), 216–238.
- Melzer, J. (1932b) Novos gêneros e novas espécies de cerambycideos do Brasil. *Revista de Entomologia*, 2 (4), 420–434.
- Melzer, J. (1935) Novos cerambycideos do Brazil, da Argentina e de Costa Rica. *Archivos do Instituto de Biologia Vegetal*, 2 (2), 173–205.
- Monné, M.A. (1976) O gênero *Lepturges* (s. str.) Bates, 1863 no Leste e Sul do Brazil (Coleoptera, Cerambycidae, Lamiinae,

- Acanthocinini). *Revista Brasileira de Biologia*, 36 (2), 357–376.
- Monné, M. A. (1993) *Catalogue of the Cerambycidae (Coleoptera) of the Western Hemisphere. Part X. Subfamily Cerambycinae: Tribes Clytini, Anaglyptini, Tillomorphini and Cleomenini*. Sociedade Brasileira de Entomologia, São Paulo, 131 pp.
- Monné, M.A. (2005) Catalogue of the Cerambycidae (Coleoptera) of the Neotropical Region. Part II. Subfamily Lamiinae. *Zootaxa*, 1023, 1–759.
- Monné, M.A. (2016) *Catalogue of the Cerambycidae (Coleoptera) of the Neotropical Region. Part I and II. Subfamilies Cerambycinae and Lamiinae*. Available at <http://www.cerambyxcat.com/> (Accessed 1 Mar. 2016)
- Monné, M.A. & Martins, U.R. (1973) Notas e descrições em Eburiini (Coleoptera, Cerambycidae). *Papéis Avulsos de Zoologia*, 27 (11), 145–155.
- Monné, M.L. & Monné, M.A. (2012) Novos táxons em Acanthocinini sul-americanos (Coleoptera, Cerambycidae). *Revista Brasileira de Entomologia*, 56 (3), 281–288.
<http://dx.doi.org/10.1590/S0085-56262012005000048>
- Monné, M.L., Monné, M.A., Aragão, A.C., Quintino, H.Y., Botero, J.P. & Machado, V.S. (2010) Inventário das espécies de Lepturinae, Parandrinae e Prioninae (Insecta, Coleoptera, Cerambycidae) do Parque Nacional do Itatiaia, RJ, Brasil. *Biota Neotropica*, 10 (2), 325–335.
<http://dx.doi.org/10.1590/s1676-06032010000200034>
- Monné, M.L., Monné, M.A. & Mermudes, J.R.M. (2009) Inventário das espécies de Cerambycinae (Insecta, Coleoptera, Cerambycidae) do Parque Nacional do Itatiaia, RJ, Brasil. *Biota Neotropica*, 9 (3), 1–30.
<http://dx.doi.org/10.1590/s1676-06032009000300027>
- Monné, M.L., Monné, M.A., Quintino, H.Y., Botero, J.P., Machado, V.S., Aragão, A. C., Simões, M.V.P. & Cupello, M. (2012) Inventário das espécies de Lamiinae (Insecta, Coleoptera, Cerambycidae) do Parque Nacional do Itatiaia, RJ, Brasil. *Biota Neotropica* 12 (1), 39–76.
<http://dx.doi.org/10.1590/s1676-06032012000100004>
- Napp, D.S. (1994) Revisão do gênero *Orthostoma* Lepeletier & A.-Serville, 1830 e descrição de *Aglaoschema*, gen. n. (Coleoptera, Cerambycidae, Compsocerini). *Revista Brasileira de Entomologia*, 38 (3–4), 645–660.
- Newman, E. (1841) Entomological notes. *The Entomologist*, 1 (6), 90–95.
- Pascoe, F.P. (1888) On some new longicorn Coleoptera. *The Transactions of the Entomological Society of London*, 1888, 491–513.
<http://dx.doi.org/10.1111/j.1365-2311.1888.tb01316.x>
- Perroud, B.P. (1855) Description de quelques espèces nouvelles ou peu connus et création de quelques nouveaux genres dans la famille des longicornes. *Annales de la Société Linnéenne de Lyon*, (2) 2, 327–401.
- Schmid, H. (2015) Eine neue Bockkafer (Coleoptera, Cerambycidae) aus Brasilien. *Zeitschrift der Arbeitsgemeinschaft Österreichischer Entomologen*, 67, 17–18.
- Thomson, J. (1861) *Essai d'une classification de la famille des cérambycides et matériaux pour servir a une monographie de cette famille*. Bouchard-Huzard, Paris, 129–396.
<http://dx.doi.org/10.5962/bhl.title.9206>
- Thomson, J. (1864) Systema cerambycidarum ou exposé de tous les genres compris dans la famille des cérambycides et familles limitrophes. *Mémoires de la Société Royale des Sciences de Liège*, 19, 1–352.
<http://dx.doi.org/10.5962/bhl.title.82379>
- Thomson, J. (1865) Diagnoses d'espèces nouvelles qui seront décrites dans l'appendix du systema cerambycidarum. *Mémoires de la Société Royale des Sciences de Liège*, 19, 353–578.
- Thomson, J. (1867) *Ibidionitarum species novae*. *Physis: Recueil d'Histoire Naturelle*, 1 (3), 133–163.
- Thomson, J. (1868) Révision du groupe des aereenites (Lamites, cérambycides, coléoptères). *Physis: Recueil d'Histoire Naturelle*, 2 (5), 92–98.
- Zajciw, D. (1962) Cinco novas espécies neotrópicas de *Colobothea* Serville, 1825 (Coleoptera, Cerambycidae, Lamiinae) com chave para determinação das espécies sul-Brasileiras. *Anais da Academia Brasileira de Ciências*, 34 (2), 281–293.
- Zajciw, D. (1963a) Novos longicórneos neotrópicos da tribo Rhinotrugini (Col., Cerambycidae, Cerambycinae). *Anais da Academia Brasileira de Ciências*, 35 (2), 241–255.
- Zajciw, D. (1963b) Revisão do gênero *Chlorethe* Bates, 1867 (Col., Cerambycidae, Cerambycinae). *Anais da Academia Brasileira de Ciências*, 35 (3), 413–419.